



Heating Technical Data

Wall mounted unit



EEDEN15-003

FTXLS-K

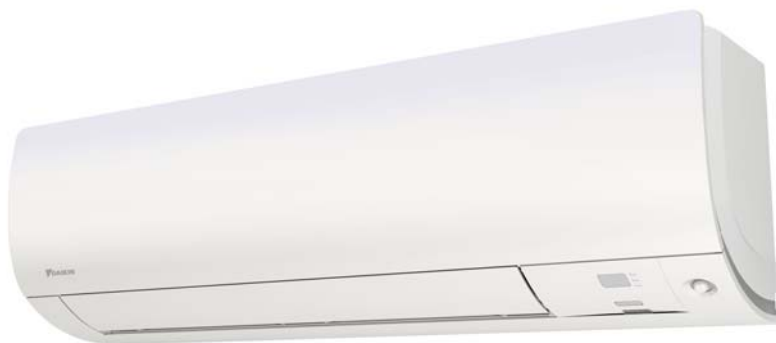
TABLE OF CONTENTS

FTXLS-K

1	Features	2
2	Specifications	3
	Technical Specifications	3
	Electrical Specifications	4
3	Options	5
4	Dimensional drawings	6
5	Centre of gravity	7
6	Piping diagrams	8
7	Wiring diagrams	9
	Wiring Diagrams - Single Phase	9
8	Sound data	10
	Sound Power Spectrum	10
	Sound Pressure Spectrum	11

1 Features

- Enhanced comfort thanks to 2- area intelligent eye, improved airflow pattern and user friendly control
- Whisper quiet in operation: the operating of the unit can hardly be heard. The sound pressure level goes down to 19dBA!
- Online controller (optional): control your indoor from any location with an app, via your local network or internet
- Discreet, modern design. Its smooth curve blends beautifully with the wall resulting in an unobtrusive presence that matches all interior décors.
- Weekly timer can be set to start heating or cooling anytime on a daily or weekly basis
- Night set mode saves energy by preventing overcooling or overheating during night time
- Titanium apatite photocatalytic air purification filter removes airborne microscopic particles, powerfully decomposes odours and helps to prevent the propagation of bacteria, viruses, microbes to ensure a steady supply of clean air
- Excellent air flow and air distribution
- High quality matt crystal white finish
- New remote control design, also in high quality matt white finish to give a perfect match with the indoor unit



Econo mode



2 area intelligent eye



Home leave operation



Night set mode



Fan only



Comfort mode



Powerful mode



Auto cooling-heating changeover



Whisper quiet



Indoor unit silent operation



3-D air flow



Vertical auto swing



Horizontal auto swing



Auto fan speed



Fan speed steps



Dry programme



Titanium apatite photocatalytic air purification filter



Weekly timer



24 hour timer



Infrared remote control



Wired remote control



Centralised control



Online controller via app



Auto-restart



Self diagnosis

2 Specifications

2-1 Technical Specifications				FTXLS25K		FTXLS35K	
Power input	Cooling	Nom.	kW	0.024 (2) / 0.024 (3) / 0.024 (4)		0.024 (2) / 0.024 (3) / 0.024 (4)	
	Heating	Nom.	kW	0.030 (2) / 0.030 (3) / 0.030 (4)		0.030 (2) / 0.030 (3) / 0.030 (4)	
Casing	Colour			White			
Dimensions	Unit	Height/Width/Depth	mm	298/900/215			
	Packed unit	Height/Width/Depth	mm	290/977/371			
Weight	Unit		kg	12			
	Packed unit		kg	15			
Heat exchanger	Length		mm	665			
	Rows	Quantity		2			
	Fin pitch		mm	1.4			
	Stages	Quantity		18			
	Tube type		Ø6,35 Hi-XB				
	Fin	Type		Multi slit fin			
Heat exchanger 2	Length		mm	660			
	Rows	Quantity		1			
	Fin pitch		mm	1.6			
	Stages	Quantity		8			
Air filter	Type			Removable / washable / mildew proof			
Fan	Type			Cross flow fan			
	Air flow rate	Cooling	High	m³/min	11.2		
				cfm	395		
			Nom.	m³/min	9.1		
				cfm	321		
			Low	m³/min	7.0		
				cfm	247		
		Silent operation	m³/min	4.1			
			cfm	145			
		Heating	High	m³/min	13.3		
				cfm	470		
			Nom.	m³/min	10.0		
				cfm	353		
	Low		m³/min	7.8			
cfm			275				
Silent operation	m³/min	4.2					
	cfm	148					
Fan motor	Model			KFD-280-23-8C			
	Speed	Steps		5 + silent, + auto			
		Cooling	High/Medium/Low/Silent operation	rpm	1,330/1,110/900/600		
					1,540/1,210/980/610		
		Heating	High/Medium/Low/Silent operation	rpm	1,540/1,210/980/610		
1,540/1,210/980/610							
Output	Rated		W	23			
Sound power level	Cooling		dBA	59			
	Heating		dBA	62			
Sound pressure level	Cooling	High/Nom./Low/Silent operation	dBA	45/39/33/21			
	Heating	Super high/High/Nom./Low/Silent operation	dBA	-/47/39/33/19			

2 Specifications

2

2-1 Technical Specifications			FTXLS25K	FTXLS35K
Refrigerant	Type		R-410A	
Piping connections	Liquid	OD	6.35	
	Gas	OD	9.5	
	Drain		18	
	Heat insulation		Both liquid and gas pipes	
Temperature control			Microcomputer control	
Air direction control			Right, Left, Horizontal, Downward	
Control systems	Infrared remote control		ARC466A9	
	Wired remote control		-	

Standard Accessories : Titanium apatite photocatalytic air purification filter; Quantity : 2;

Standard Accessories : Operation manual; Quantity : 1;

Standard Accessories : Indoor unit fixing screws; Quantity : 2;

Standard Accessories : Infrared remote control; Quantity : 1;

Standard Accessories : Remote control holder; Quantity : 1;

Standard Accessories : Batteries; Quantity : 2;

Standard Accessories : Mounting plate; Quantity : 1;

Standard Accessories : Installation manual; Quantity : 1;

2-2 Electrical Specifications				FTXLS25K	FTXLS35K
Power supply	Name			V1	
	Phase			1~	
	Frequency	Hz		50	
	Voltage	V		220-240	
Current	Nominal running current (RLA) - 50Hz	Cooling	A	0.11 (2) / 0.11 (3) / 0.11 (4)	0.11 (2) / 0.11 (3) / 0.11 (4)
		Heating	A	0.14 (2) / 0.14 (3) / 0.13 (4)	0.14 (2) / 0.14 (3) / 0.13 (4)
Wiring connections - 50Hz	For power supply	Remark		3 for power supply, 4 for interunit wiring (Earth wire included)	

Notes

(1) When connected with multi-system outdoor unit, refer to the specifications of the multi outdoor unit to be connected.

(2) 220V

(3) 230V

(4) 240V

3 Options

3 - 1 Options

FTXLS-K

Adapters and controls	Wired remote control		BRC944 (1)
	Cord for wired remote control	3m	BRCW901A03
		8m	BRCW901A08
	Wiring adapter normal open contact / normal open pulse contact		KRP413A1S (2)
	Centralised control board-up to 5 rooms		KRC72 (3)
	Anti-theft protection for remote control		KKF910A4
	Interface adapter for DIII-net		KRP928BB2S
	Online controller		BRP069A42
	Modbus gateway		RTD-RA
	KNX gateway		KLIC-DD
Others	Titanium apatite photocatalytic air-purifying filter without frame		KAF970A46

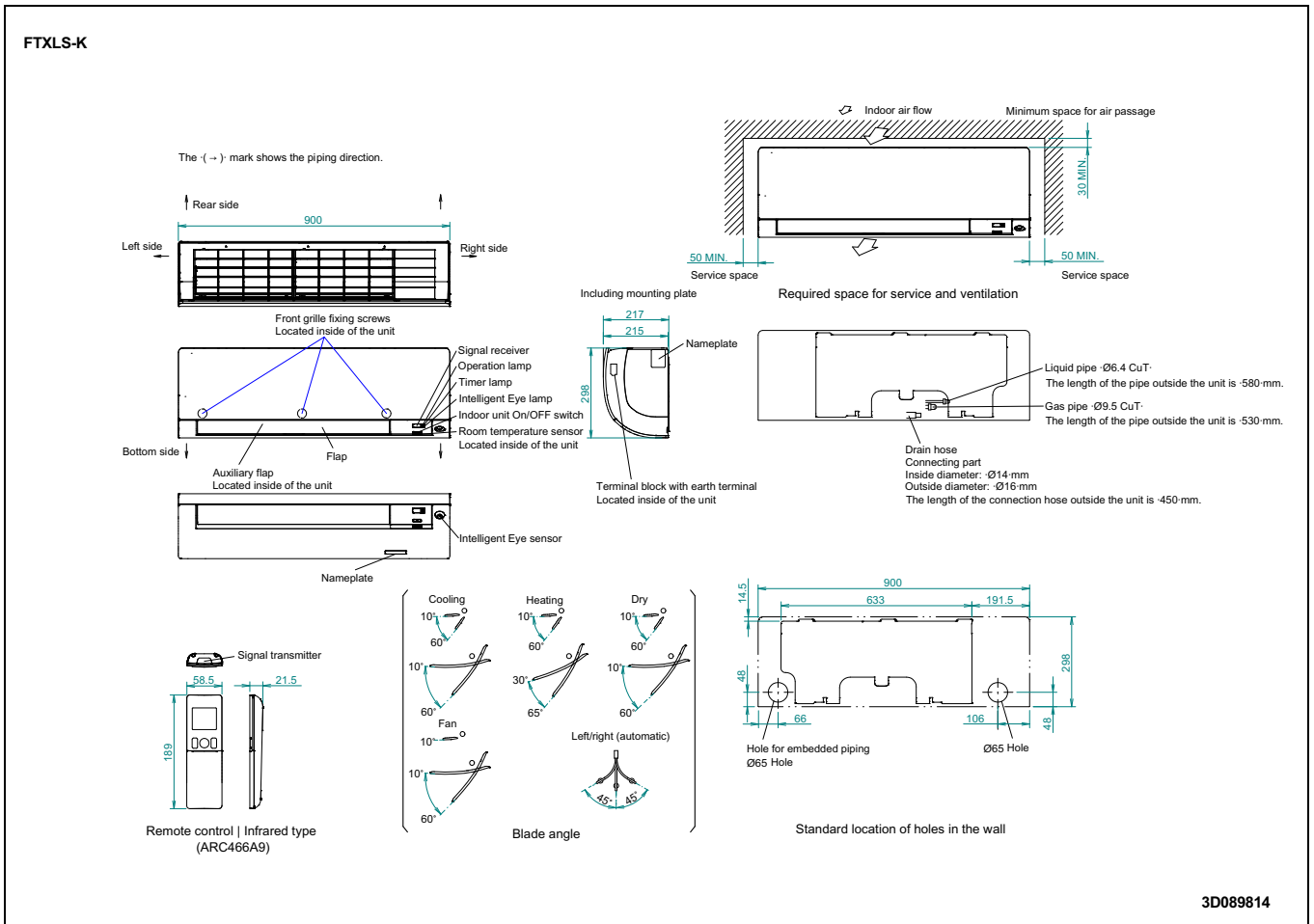
Notes

- 1 Cord for wired remote control BRCW901A03 or BRCW901A08 required.
- 2 Wiring adapter supplied by Daikin. Time clock and other devices: to be purchased locally.
- 3 Wiring adapter is also required for each indoor unit.

4 Dimensional drawings

4 - 1 Dimensional Drawings

4

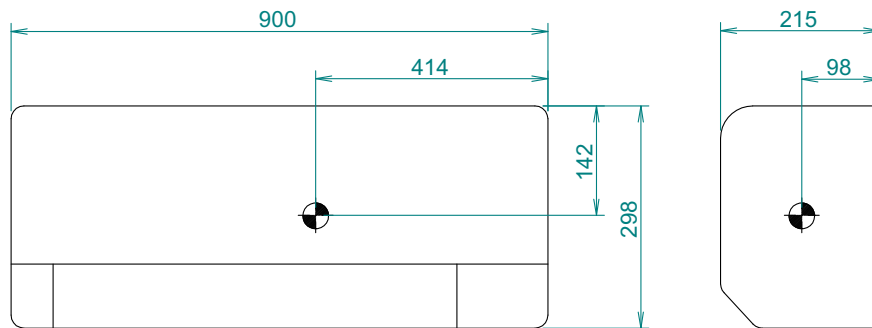


6

5 Centre of gravity

5 - 1 Centre of Gravity

FTXLS-K

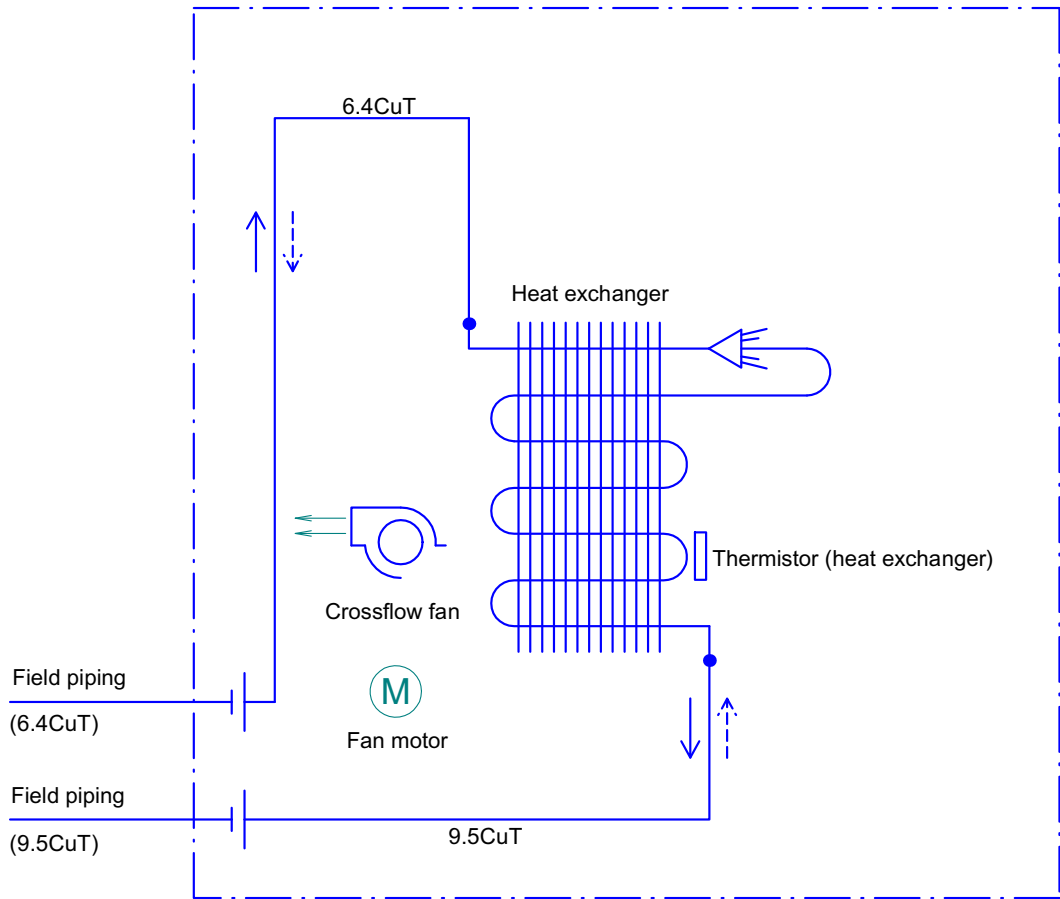


4D089716

6 Piping diagrams

6 - 1 Piping Diagrams

FTXLS-K



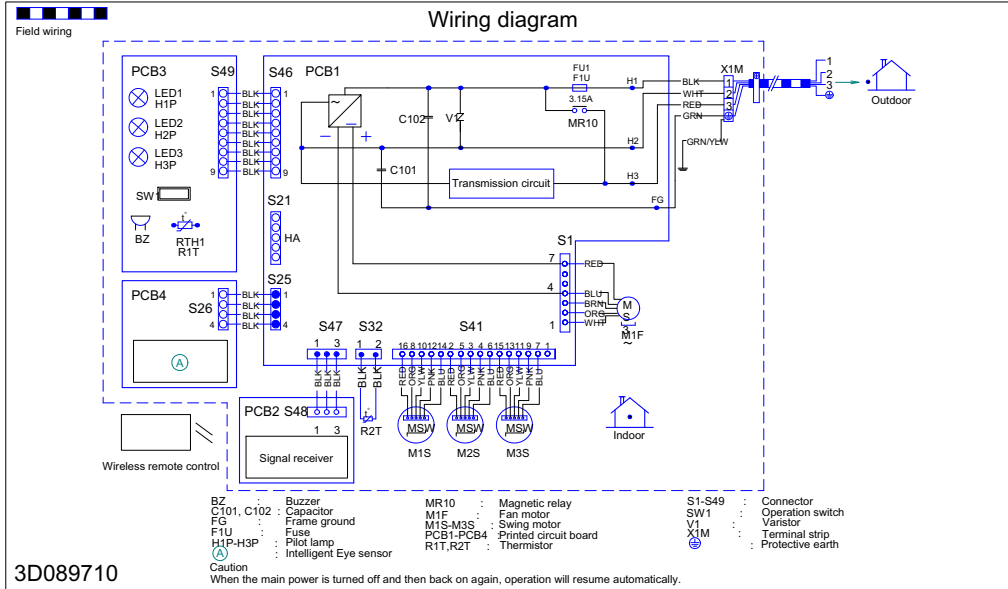
Refrigerant flow
 —> Cooling
 - - -> Heating

4D089711

7 Wiring diagrams

7 - 1 Wiring Diagrams - Single Phase

FTXLS-K



Notes

1. Size: length :70· X width :120.
2. Refer to purchasing specification -AS(Y)303002, unless otherwise specified.

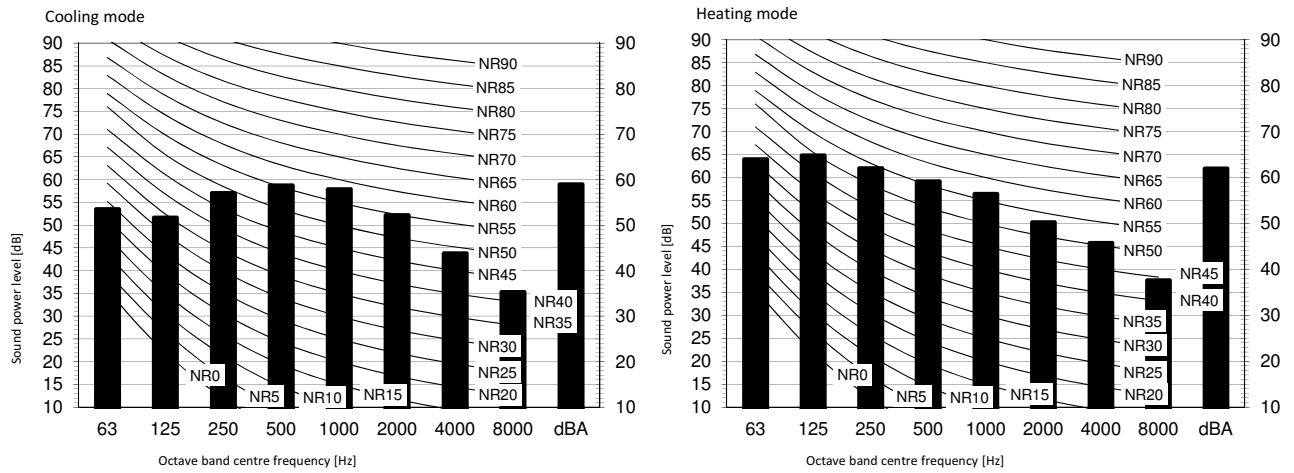
3D089710

8 Sound data

8 - 1 Sound Power Spectrum

8

FTXLS-K



Notes

- 1 dBA = A-weighted sound power level (A scale according to IEC).
- 2 Reference acoustic intensity 0dB = 10E-6μW/m2
- 3 Measured according to ISO 3744

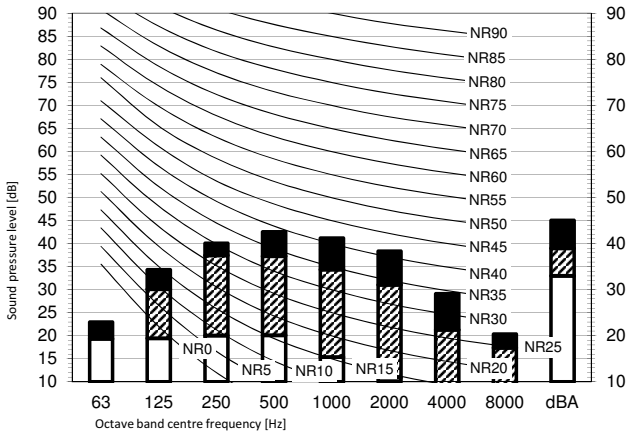
3D090104

8 Sound data

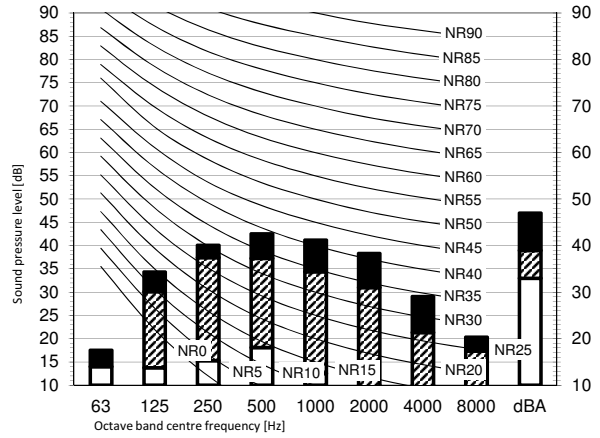
8 - 2 Sound Pressure Spectrum

FTXLS-K

Cooling mode



Heating mode



Notes

1. Operating conditions: power source 220-240 V/220 V 50/60 Hz; JIS standard
2. Background noise already taken into account.
3. Operating noise varies depending on operation and ambient conditions.
4. The operation noise measuring method is in accordance with JISC9612.
5. Measuring location: anechoic chamber

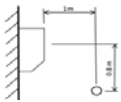
Legend

dBA = A-weighted sound pressure level (A scale according to IEC).

A Scale

- B High-tap
- C Medium-tap
- D Low-tap

Location of microphone



Cooling			Total dB		
A	B	C	A	B	C
dBA	45	33			

Heating			Total dB		
A	B	C	A	B	C
dBA	47	33			

3D089930



Daikin Europe N.V. participates in the Eurovent Certification programme for Liquid Chilling Packages (LCP), Air handling units (AHU) and Fan coil units (FCU). Check on-going validity of certificate online: www.eurovent-certification.com or using: www.certiflash.com

The present leaflet is drawn up by way of information only and does not constitute an offer binding upon Daikin Europe N.V.. Daikin Europe N.V. has compiled the content of this leaflet to the best of its knowledge. No express or implied warranty is given for the completeness, accuracy, reliability or fitness for particular purpose of its content and the products and services presented therein. Specifications are subject to change without prior notice. Daikin Europe N.V. explicitly rejects any liability for any direct or indirect damage, in the broadest sense, arising from or related to the use and/or interpretation of this leaflet. All content is copyrighted by Daikin Europe N.V.

BARCODE

Daikin products are distributed by: